

PART OF S.E. 1/4, SEC. 29, T.7N., R.1W., S.L.B. & M.

35

NORTH OGDEN BLOCK 36, PLAT A

TAXING UNIT 10

IN NORTH OGDEN CITY
SCALE 1" = 50'

PREFIX 18-035

CENTRAL WEBER SEWER IMPROVEMENT DIST.
BEN LOMOND CEM. MAINT. DIST.

SEE P. 52

2850 NORTH STREET

Mt. #16

Mt. #15

Mt. #46

S. 89°45'E

SEE P. 53

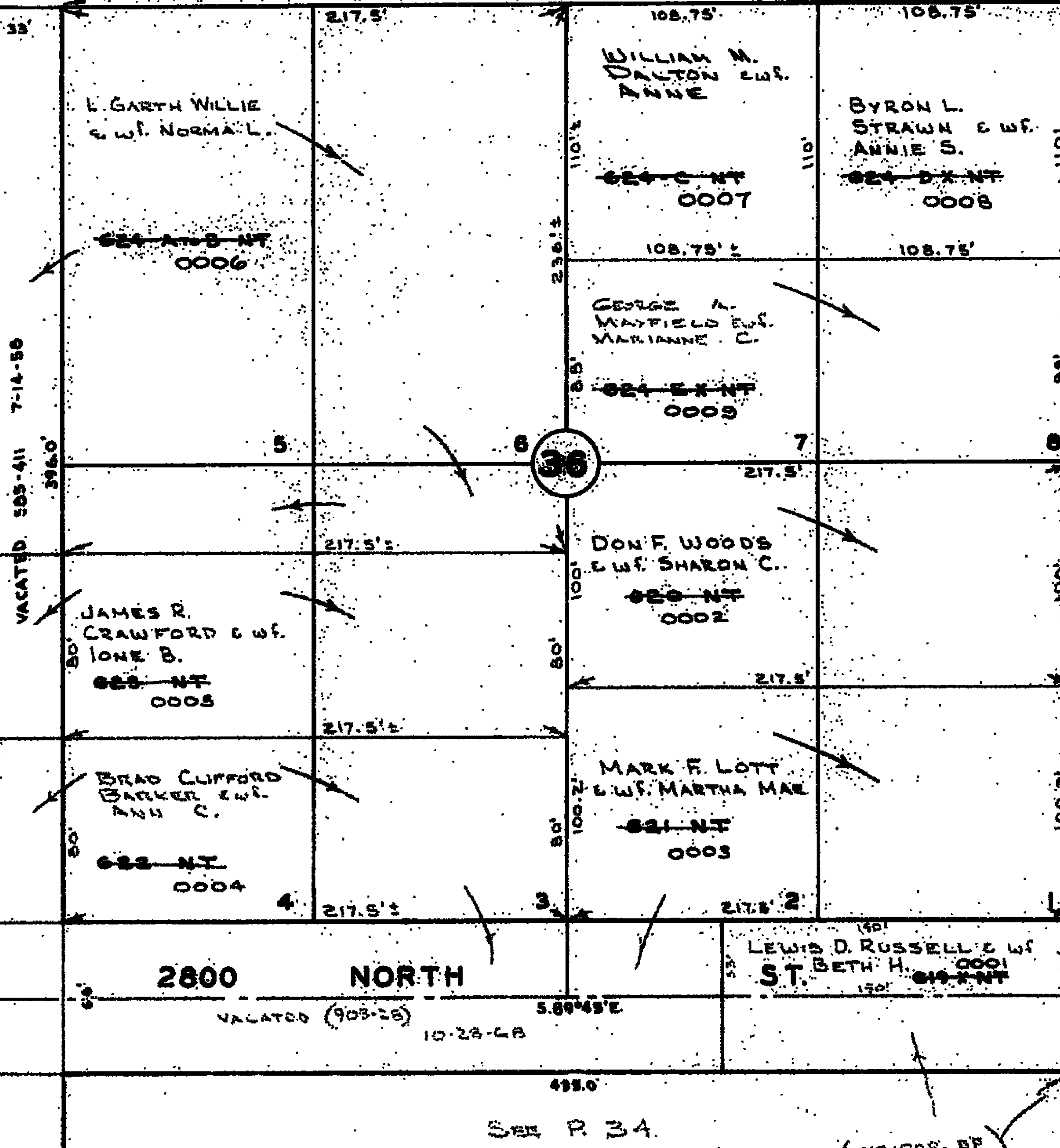
WASHINGTON AVENUE

400 EAST STREET

400 EAST STREET

450 EAST STREET

450 EAST STREET



SEE P. 36

SEE P. 34

(NE COR. OF
BLOCK 35)